



Charleton C of E Academy

Weekly Newsletter

Friday 23rd February 2024

Dear Families,

Welcome back after the half term. I hope you and your families enjoyed the half term and that the children are feeling refreshed for the second half of the spring term. This week the children enjoyed an assembly from the Kingsbridge Youth for Christ which focused on recycling. Across the school, the children have been thinking about how they learn and have spent some time reflecting on portraits they sketched. It was fantastic to see how they were beginning to articulate their strengths and weaknesses identifying areas to improve. This is an area of learning that we shall be developing for the rest of the year.



Dates for the Diary

Wednesday 28th February – Forest School
Thursday 7th March – World Book Day
Monday 11th – Friday 15th March – Year 5/6 Residential
Wednesday 13th March – Forest School
Friday 15th March – Comic Relief Day
Tuesday 26th March – Croft to Buckland Abbey – More information to follow
Wednesday 27th March – Forest School
Thursday 28th March – Easter Service at St Marys Church
Thursday 28th March – Last day of Term
Monday 15th April – Non Pupil Day
Tuesday 16th April – Back to School

Beesands & Start Point

As mathematicians we have been learning to describe and name 2d and 3d shapes extending our vocabulary and understanding key concepts regarding shape.

As geographers we have continued our exploration of the British Isles by learning about some of the amazing physical features the UK has to offer. The EYFS children have been listening to the story of the 3 Billy Goats Gruff and will we continue to explore this traditional tale over the next few weeks as we link this story to the KS1 children and their Design and Technology learning about bridge construction. Stretchy materials were being

compared and results evaluated as KS1 children were challenged to find a material that NASA could use as a space tether!



Craft

This week in Craft class we have been scientists and explored how to sort different states of matter. Some of us also worked as a team to separate a mixture of different materials. Through this, we demonstrated a range of teamwork skills.

In maths, we have been exploring fractions and decimals. As budding writers, we embarked on a new journey centred around blog writing, igniting our creativity and narrative prowess.

In our DT (Design and Technology) sessions, we revisited the fascinating world of electricity circuits, dissecting torches to understand their inner workings. Armed with this knowledge, we eagerly anticipate designing our very own torches in the lessons to come.



Stars of the Week

George Pike – for plucking up the courage to in front to the class and count to 100
Primrose – for working well in Maths all week



Values of the Week

Monroe – for showing friendship and care towards others when they are upset.
Rocco – for always being kind & optimistic!



Attendance

Our attendance target is 98%

Our whole school attendance is currently 94.6%

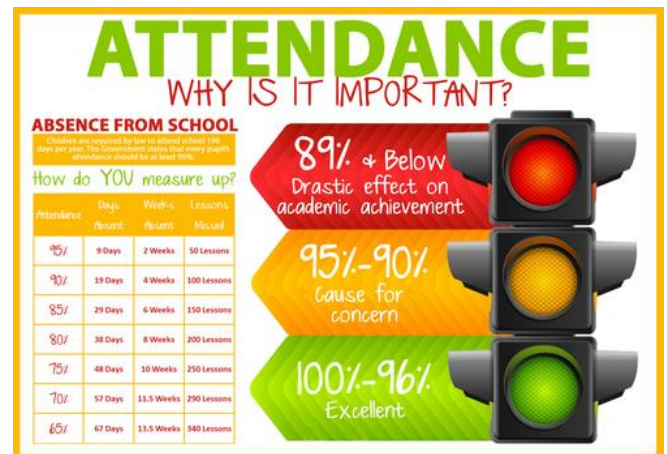
Class attendance is currently:

Start Point Attendance 92% Croft Attendance 96%

Is my child too ill for School?

It can be tricky deciding whether or not to keep your child off school, nursery or playgroup when they're unwell. If you do keep your child at home, it's important to phone the school or nursery on the first day. Let them know that your child won't be in and give them the reason. The link below has some useful information on when children should stay at home.

[Is my child too ill for school? - NHS \(www.nhs.uk\)](http://www.nhs.uk)



Home Learning – Start Point

Reading for KS1 and Reception.
KS1 children practise names and qualities of 3d and 2d shapes. EYFS – can you find another version of the 3 Billy Goats Gruff to read at home and to bring in to share?



Home Learning – Croft

Continue to read at home as much as you can and regularly log onto TTRS for small chunks of learning.

To help with our writing over the next few weeks, have a look for some blogs that interest you. See if you can find the features of a blog, we identified this week? Bring a copy of the blog or some notes on it to share with the rest of the class.



Dates for the Diary:

Wednesday 28th February – Forest School
Thursday 7th March – World Book Day
Monday 11th – Friday 15th March – Year 5/6 Residential
Wednesday 13th March – Forest School
Friday 15th March – Comic Relief Day
Tuesday 26th March – Croft to Buckland Abbey – More information to follow
Wednesday 27th March – Forest School
Thursday 28th March – Easter Service at St Marys Church
Thursday 28th March – Last day of Term
Monday 15th April – Non Pupil Day
Tuesday 16th April – Back to School



Lottery Funded Family Days 2024

Wild Embers are supporting families with SEND children 6-11 yrs with funded weekend activities

Family Day: Join us at our beautiful site at Blackberry Barn this 2024 for one of our winter family days. The day will include bush crafts, exploring nature and outdoor cooking, with lunch around the fire. Food provided.

Dates: March 2nd, March 3rd, April 27th, April 28th, June 8th, June 9th

Wild Embers is a community orientated and highly impactful provider that has been running since 2017. We are members of the alternative providers network, the parent and carer forum Devon, and have established connections with a large number of Academies. We run a successful Ofsted registered forest school, community gatherings/feasts, father & child days, with a range of specialist support offerings for children and families with SEND.



Cost: We ask for a minimum donation of £5. Any donations you give go will enable us to work with more children and families with special educational and social and emotional health needs, so give generously if you are able.

What's On

ADDRESS, DIRECTIONS & BOOKING

To book a family day: email admin@wildembers.org

Cost: Donation only (minimum donation of £5 per family)

Address: Blackberry Barn, Ritson, Halwell, TQ9 7JG

Satnav Instructions:

Follow up until Totnes cross petrol station no further.

Then follow the road around to Kingsbridge (away from Totnes), you will see a sign that says Kingsbridge 6 miles, please take the left hand turn just behind the sign, follow the lane into the old farmyard, now beautiful barn conversions.

Take a slight right, drive in-between new barn conversion and an agricultural barn. The driveway leading to the parking area is directly in front of you between the house and fence. Head down the driveway where you can park on the ménage to your left.

What3words:

Wiggles.worthy.quicker

If you have trouble finding us please do contact either Mel or Richard.

Mel 07967 755357

Richard 07906 529371





No plans tomorrow?

All Fusion leisure centres here in the South Hams are offering you and your families FREE taster sessions this Saturday, 24 February.

Try your hand at Power and Lift, Zumba and HIIT workouts or make a splash in the pool with a Wet and Wild session or lane swim.

There are also FREE gym sessions all day.

Find out more on the [Fusion Lifestyle app](#) or [find your nearest centre](#) for a full programme.